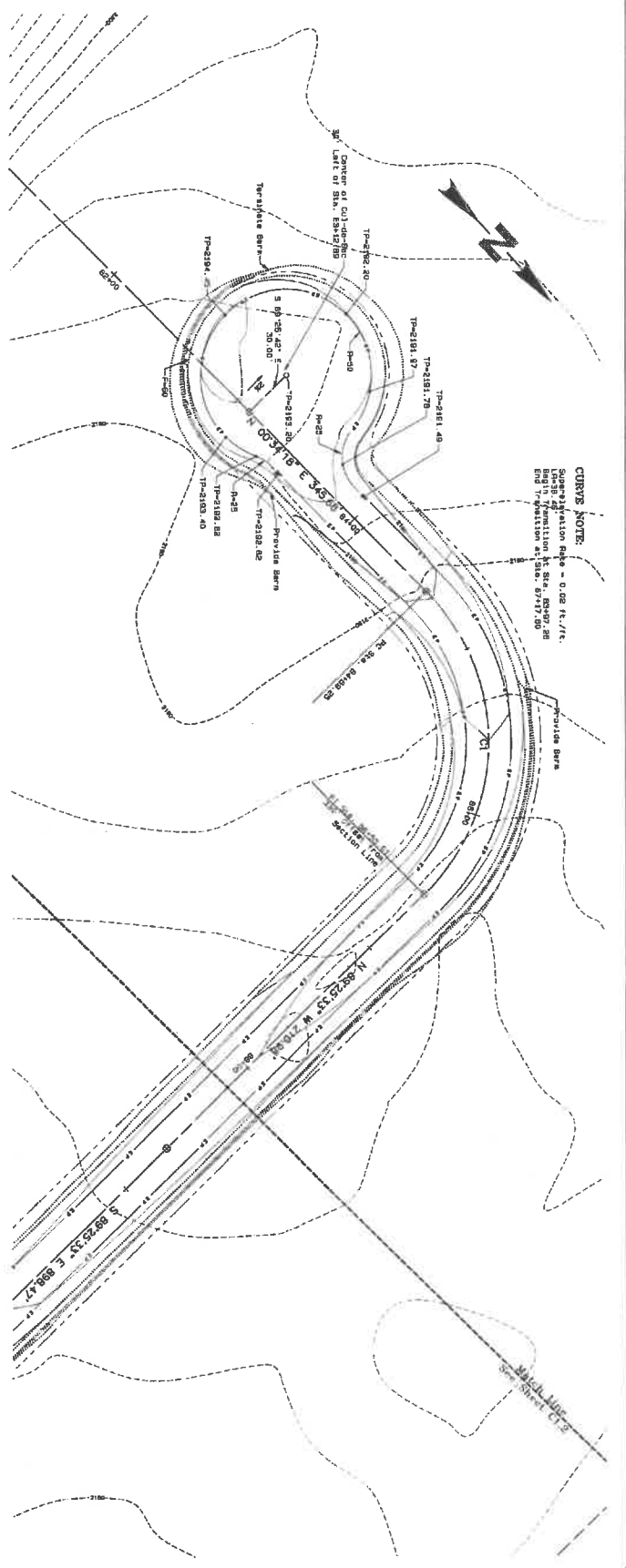


CURVE TABLE

| Curve | Sta. | Length | Grade | Grade | Grade |
|-------|----------|--------|-------|-------|-------|
| 1 | 82+17.89 | 100.00 | -0.02 | +0.02 | +0.02 |
| 2 | 85+33.59 | 100.00 | -0.02 | +0.02 | +0.02 |
| 3 | 88+31.24 | 74.00 | -0.02 | +0.02 | +0.02 |



SHEET NO.
 C1.1
 148088
 148089

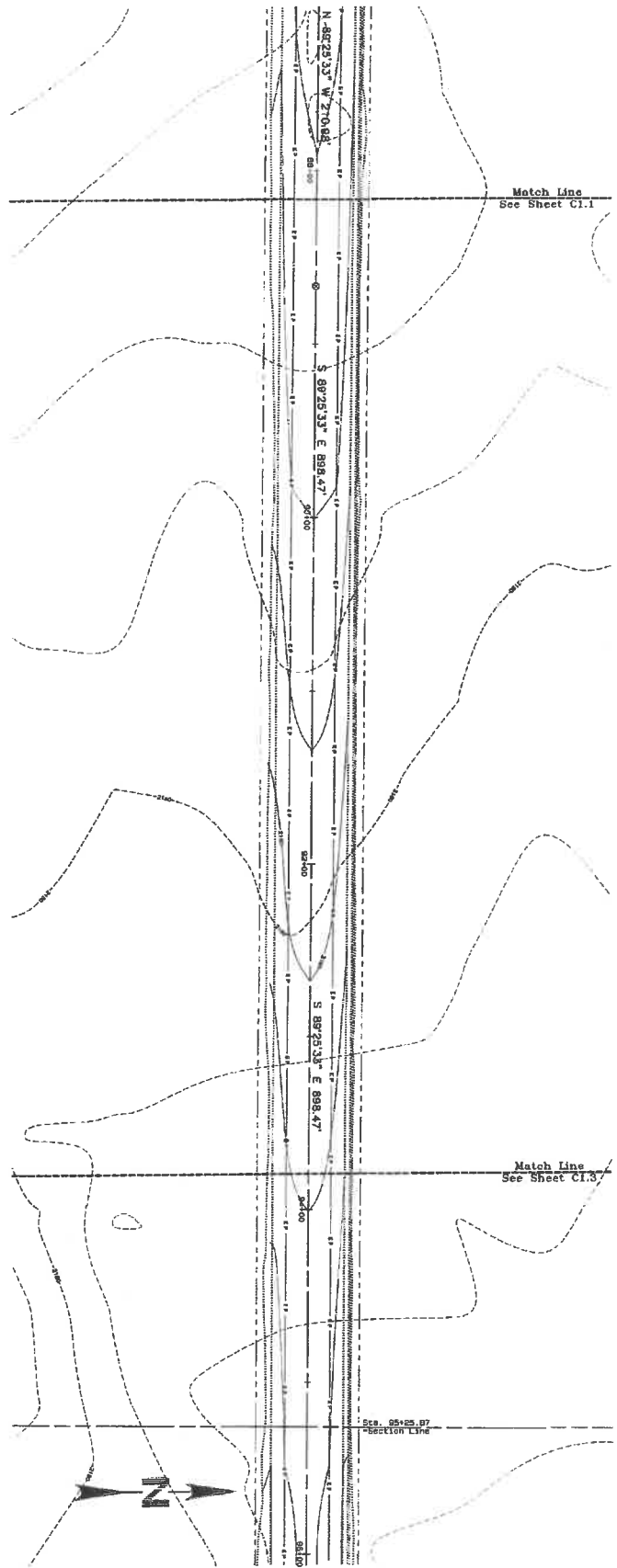
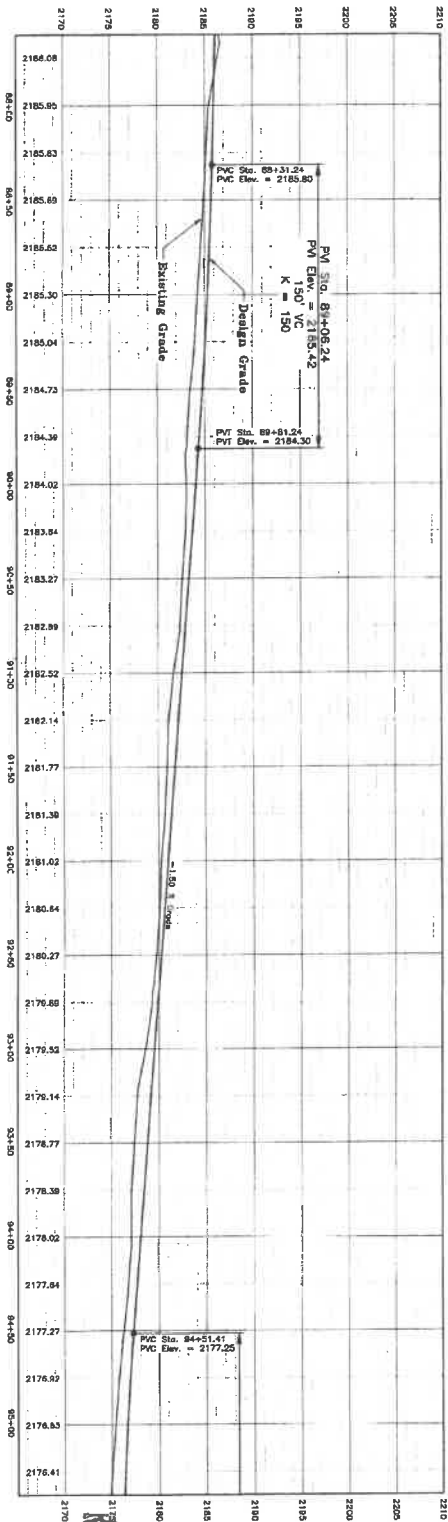
BIG CREEK DEVELOPMENT
 Lund Lane Improvement Package
 Sta. 82+00 to 87+50
 Plan and Profile

Kittitas County Washington

| No. | Revision | Date | By |
|-----|----------|------|----|
| | | | |

WESTERN PACIFIC
 ENGINEERING & SURVEY
 A TERRA DEVELOPMENT SERVICES CORPORATION
 1328 E. Hunter Place, Moses Lake, Washington
 (509)765-1023 F(509)765-1255
 Services in Washington and Idaho





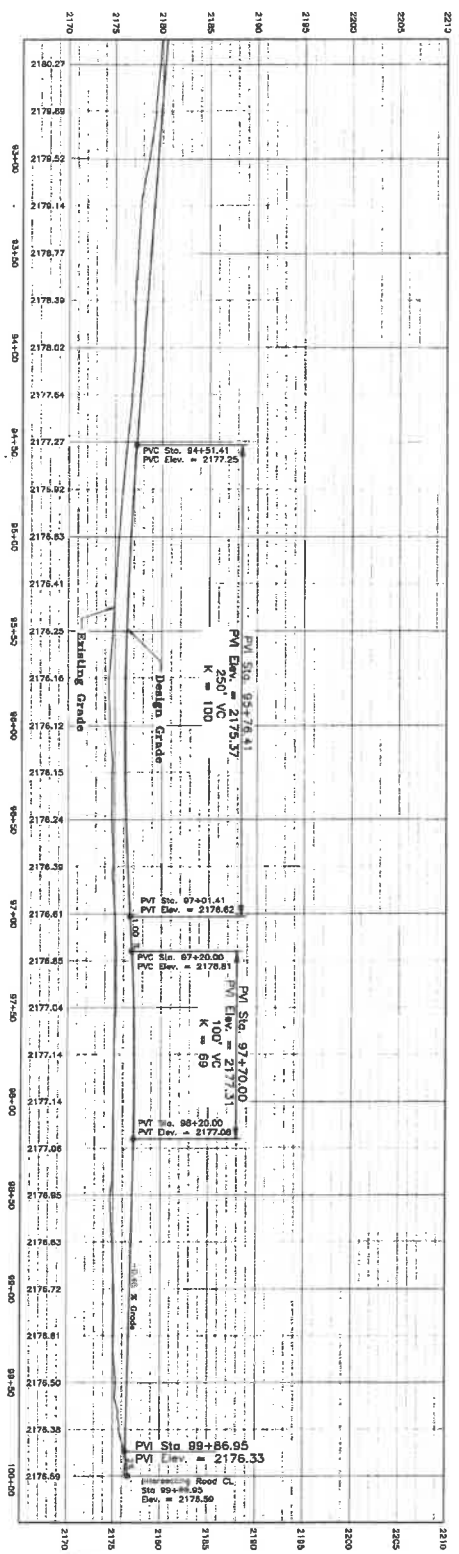
SHEET NO.
C1.2
 148028
 148029

BIG CREEK DEVELOPMENT
Lund Lane Improvement Package
 Sta. 87+50 to 95+50
Plan and Profile

| No. | Revision | Date | By |
|-----|----------|------|----|
| | | | |
| | | | |
| | | | |

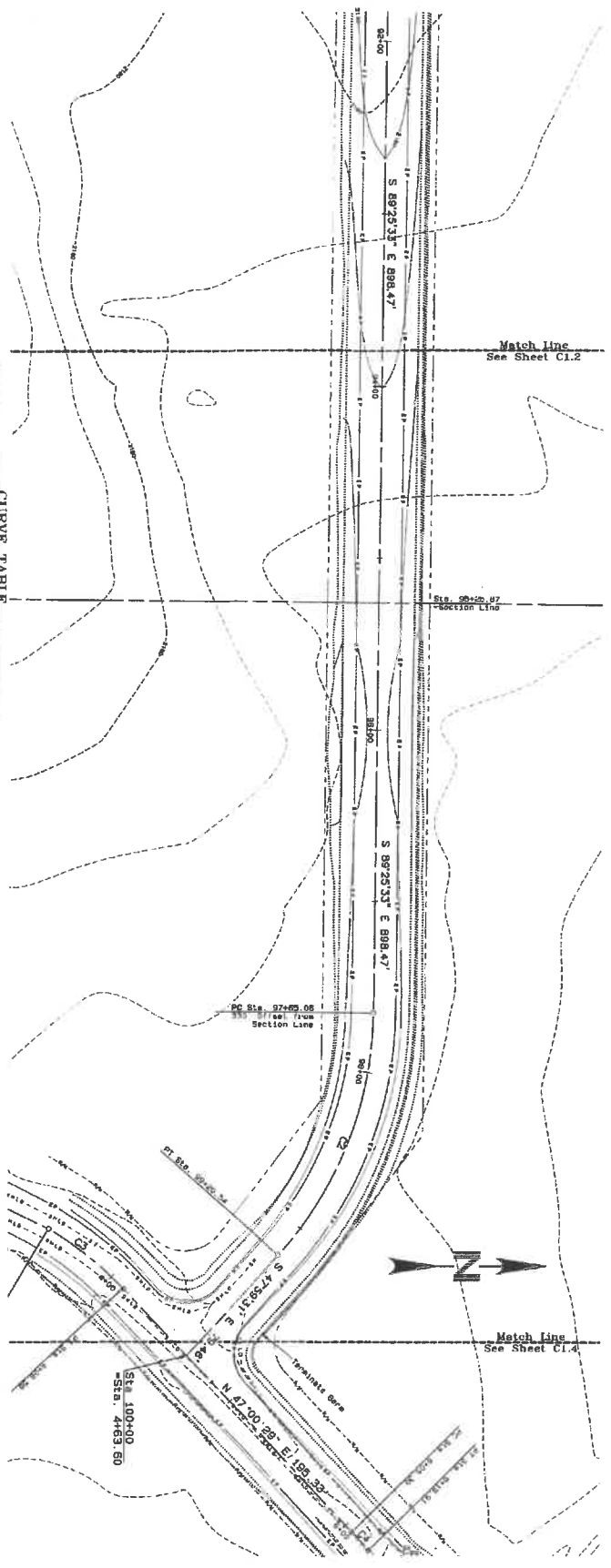
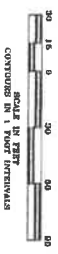
WESTERN PACIFIC
ENGINEERING & SURVEY
 A REG. INSTRUMENT SERVICES CORPORATION
 1528 E. Hunter Place, Moses Lake, Washington
 T: (509) 765-1073 F: (509) 765-1298
 Service to Washington and Idaho





CURVE TABLE

| Station | Curve Type | Radius (ft) | Length (ft) | PC | PV | PT | Grade (%) |
|----------|------------|-------------|-------------|----------|----------|----------|-----------|
| 84+51.41 | Vertical | 250' | 100' | 84+51.41 | 84+51.41 | 84+51.41 | 0.00 |
| 87+00.00 | Vertical | 100' | 69' | 87+00.00 | 87+00.00 | 87+00.00 | 0.00 |
| 88+86.95 | Vertical | 100' | 69' | 88+86.95 | 88+86.95 | 88+86.95 | 0.00 |



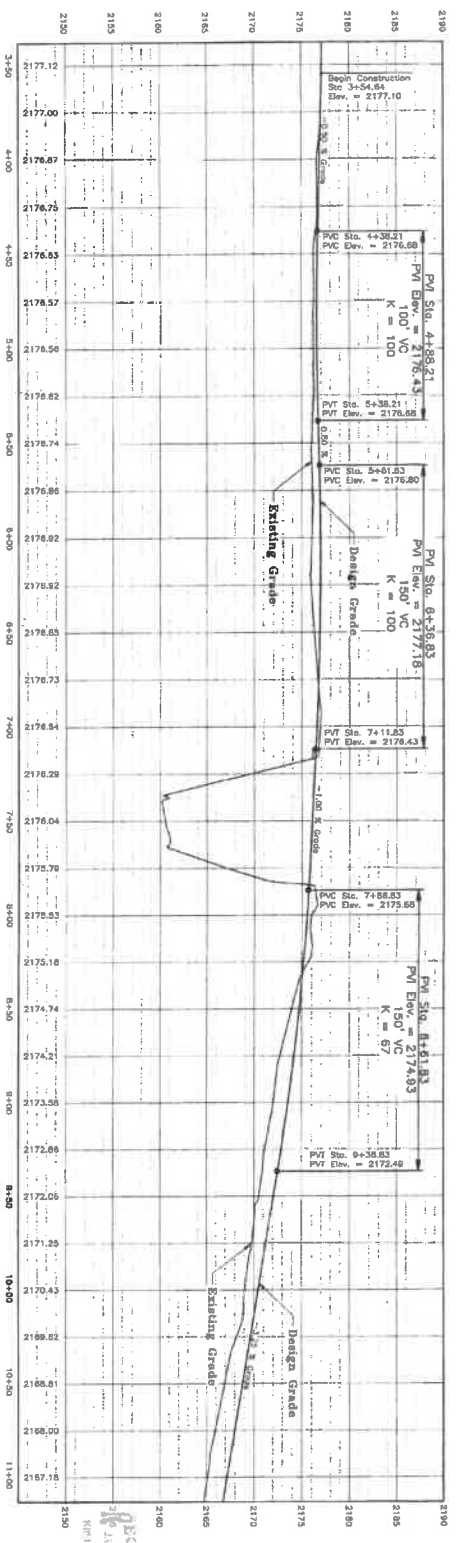
SHEET NO. C1.3
148098
148099

BIG CREEK DEVELOPMENT
Lund Lane Improvement Package
Sta. 93+00 to 100+00
Plan and Profile

| | | | |
|--|--|--|--|
| | | | |
| | | | |
| | | | |

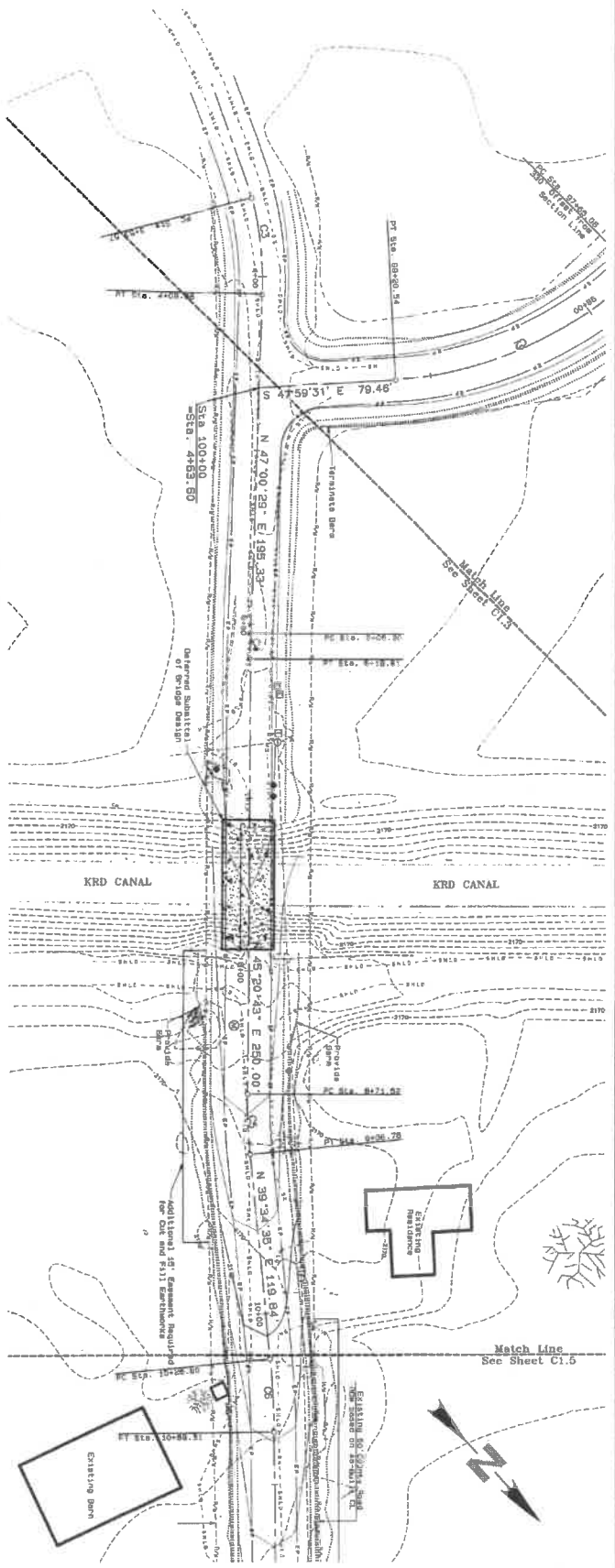
WESTERN PACIFIC ENGINEERING & SURVEY
A TERRA DEVELOPMENT SERVICES CORPORATION
1325 E. Heather Way, Moses Lake, Washington
T(509)765-1025 F(509)765-1298
Serving in Washington and Idaho





CURVE TABLE

| STATION | ASC | GRAD | BEARING | RADIUS | DELTA | TANGENT |
|---------|------|-------|-----------------|---------|---------|---------|
| 4+38.21 | 100' | 1.00% | S 79° 42' 28" E | 100.00' | 100.00' | 100.00' |
| 5+61.83 | 100' | 1.00% | N 15° 00' 00" E | 100.00' | 100.00' | 100.00' |
| 6+36.83 | 150' | 1.50% | N 15° 00' 00" E | 150.00' | 150.00' | 150.00' |
| 7+11.83 | 150' | 1.50% | N 15° 00' 00" E | 150.00' | 150.00' | 150.00' |
| 7+46.83 | 67' | 0.67% | N 39° 34' 38" E | 67.00' | 67.00' | 67.00' |
| 8+36.83 | 67' | 0.67% | N 39° 34' 38" E | 67.00' | 67.00' | 67.00' |



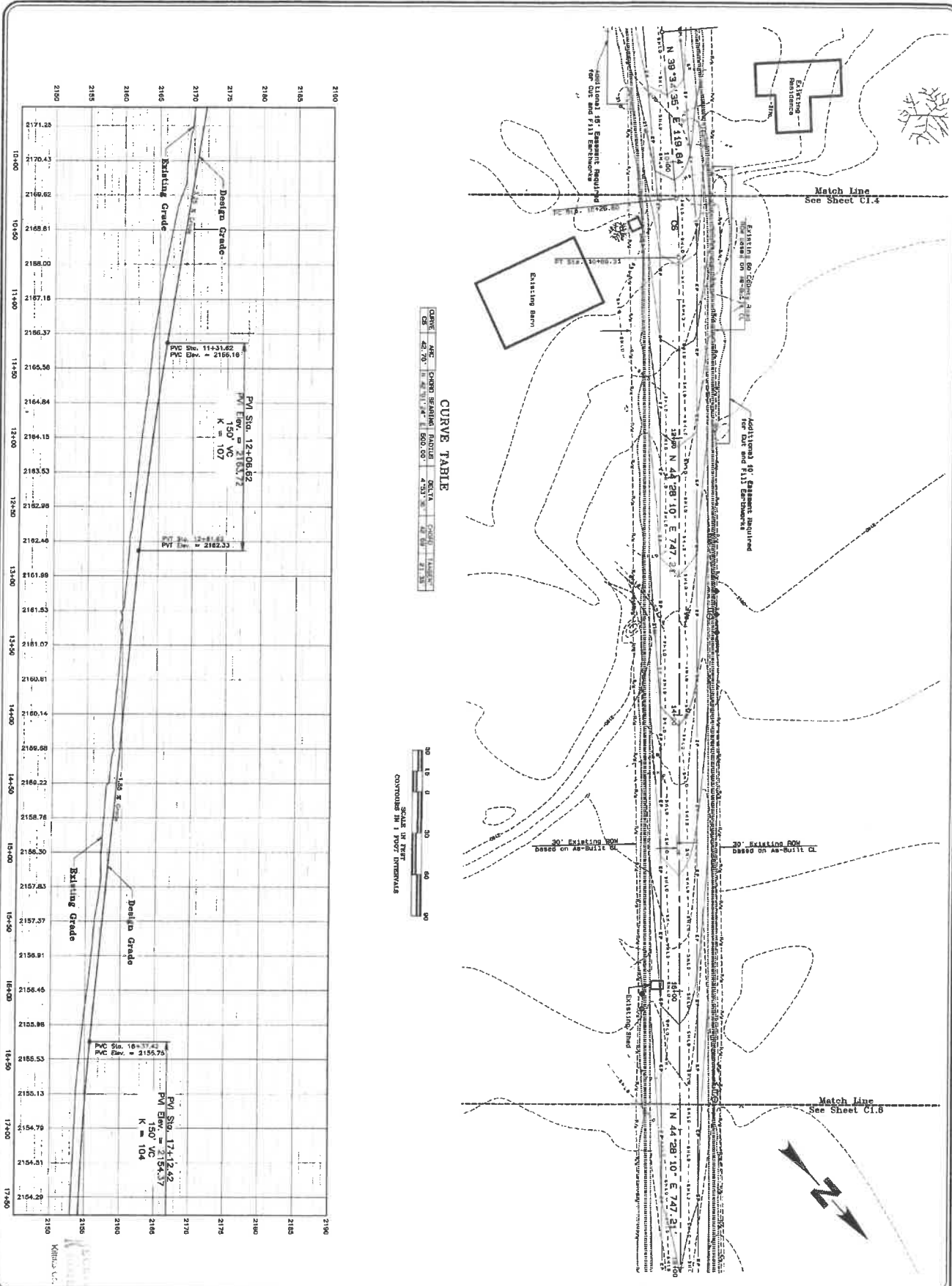
SHEET NO.
C1.4
143028
143029

BIG CREEK DEVELOPMENT
Lund Lane Improvement Package
Sta. 03+00 to 11+00
Plan and Profile

| No. | Revision | Date | By |
|-----|----------|------|----|
| | | | |

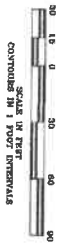
WESTERN PACIFIC
ENGINEERING & SURVEY
A TERRA DEVELOPMENT SERVICES CORPORATION
1325 E. Munier Place, Moses Lake, Washington
T: (509) 765-1023 F: (509) 765-1298
Service to Washington and Idaho





CURVE TABLE

| Station | Curve Description | Radius (ft) | Delta (deg) | Length (ft) | PC Station | PVI Station | PT Station |
|----------|-------------------|-------------|-------------|-------------|------------|-------------|------------|
| 11+31.82 | 150' VC | 150 | 107 | 150 | 11+31.82 | 11+31.82 | 11+31.82 |
| 12+06.82 | 150' VC | 150 | 107 | 150 | 12+06.82 | 12+06.82 | 12+06.82 |
| 17+12.42 | 150' VC | 150 | 104 | 150 | 17+12.42 | 17+12.42 | 17+12.42 |



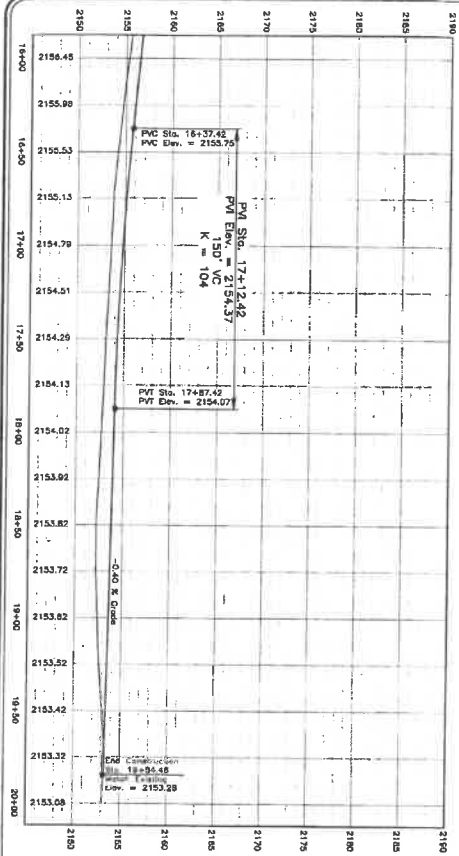
SHEET NO.
C1.5
 142028
 14R059

BIG CREEK DEVELOPMENT
 Lund Lane Improvement Package
 Sta. 10+00 to 17+00
 Plan and Profile

| No. | Revision | Date | By |
|-----|----------|------|----|
| | | | |

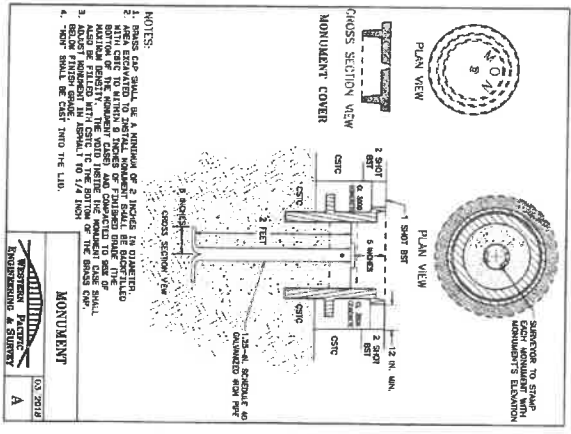
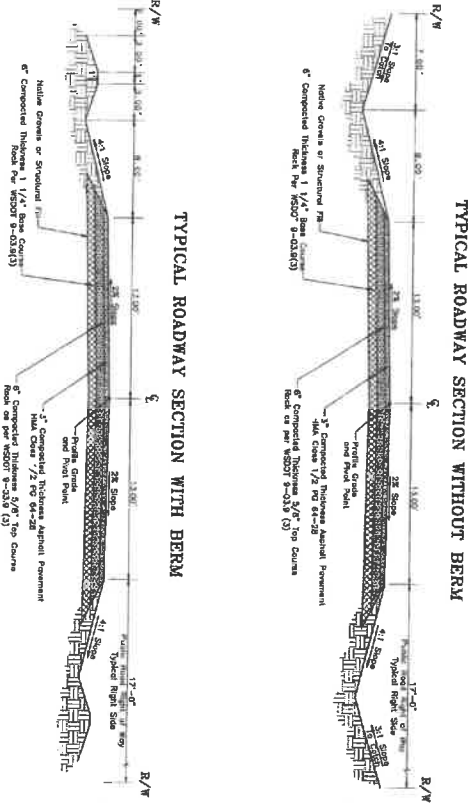
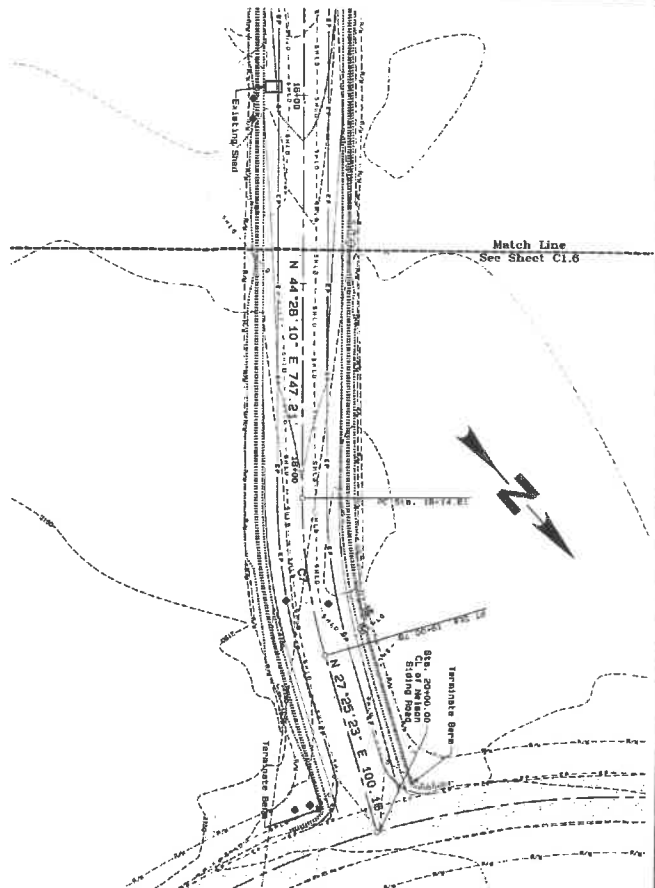
WESTERN PACIFIC
 ENGINEERING & SURVEY
 A TERRA DEVELOPMENT SERVICES CORPORATION
 1328 E. Harbor Place, Moses Lake, Washington
 T(509)765-1023 F(509)765-1208





CURVE TABLE

| Station | Curve | ARC Length | Grade | Grade | Grade | Grade | Grade |
|----------|-------|------------|--------|--------|--------|--------|--------|
| 16+37.42 | 1 | 200.00' | -0.40% | -0.40% | -0.40% | -0.40% | -0.40% |
| 17+12.42 | 2 | 200.00' | -0.40% | -0.40% | -0.40% | -0.40% | -0.40% |
| 17+87.42 | 3 | 200.00' | -0.40% | -0.40% | -0.40% | -0.40% | -0.40% |



- NOTES:**
1. THIS CAP SHALL BE A MINIMUM OF 2 INCHES THICK.
 2. AREA EXCAVATED TO INSTALL MONUMENT SHALL BE DOWNGRADED TO ORIGINAL GRADE AND COMPACTED TO 95% OF STANDARD SPEC. ALL EXCAVATION SHALL BE FILLED WITH FILL TO ORIGINAL GRADE SHALL BE FILLED WITH FILL TO 1/4 INCH.
 3. MONUMENT SHALL BE SET INTO THE LAB.
 4. MONUMENT SHALL BE SET INTO THE LAB.

MONUMENT
 WESTERN PACIFIC
 ENGINEERING & SURVEY
 A

SHEET NO.
C1.6
 145028
 145029

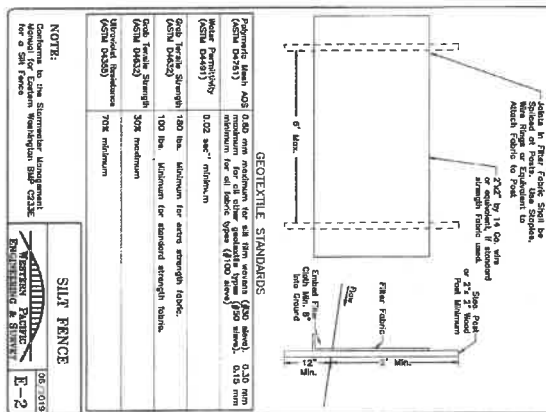
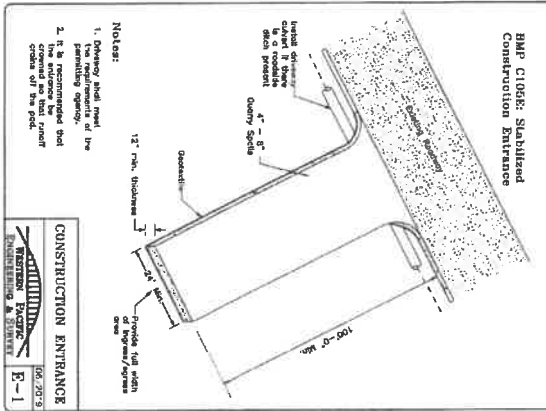
BIG CREEK DEVELOPMENT
 Lund Lane Improvement Package
 Sta. 16+00 to 20+00
 Plan and Profile

Washington
 No. Revision
 Date By

WESTERN PACIFIC
 ENGINEERING & SURVEY
 A TERRA DEVELOPMENT SERVICES CORPORATION
 1328 E. Hunter Place, Moses Lake, Washington
 T: (509)765-1023 F: (509)765-1292
 Service to Washington and Idaho



- * Muck Clearing Lists
 - To protect and remove the area of soil exposed to construction, the lists of construction will be clearly marked before land-clearing activities begin. During the clearing process, the lists will be clearly marked with the following information:
 - Muck clearing lists will be established and indicated on Sheet C3.1
 - Muck clearing lists will be established and indicated on Sheet C3.1
 - Muck clearing lists will be established and indicated on Sheet C3.1
- * Erosion Construction Areas
 - Construction activities occurring on exposed areas shall be indicated, yet where necessary, access points shall be established to maintain and create of existing grade, utility roads, and small utility, street lighting, and street cleaning equipment. All construction shall be indicated on site. The specific items related to establishing construction areas shall be indicated on Sheet C3.1.
- * Control Flow Rate
 - Due to all streamer runoff being retained on site, there will be no flow control required.
- * Sediment Controls
 - All stormwater runoff from disturbed areas shall pass through an appropriate sediment control before leaving the construction site or prior to being discharged to an project feature. BMP C102B - 100' x 10' silt fence or equivalent shall be used on all project features. BMP C102B - 100' x 10' silt fence or equivalent shall be used on all project features.
 - Silt fence BMP C102B - 100' x 10' silt fence or equivalent shall be used on all project features.
- * Stabilize Soils
 - Exposed and undisturbed soils shall be stabilized with the application of effective soil stabilization that shall be used on this project include:
 - Plastic covering BMP C120I
 - Straw mulch BMP C120I
 - Geotextile BMP C120I
- * Protect Slopes
 - All cut and fill slopes will be assigned, constructed and protected in a manner that will prevent erosion. The following shall be used to protect slopes for this project:
 - Plastic covering BMP C120I
 - Straw mulch BMP C120I
 - Geotextile BMP C120I



| Material | Minimum Strength | Minimum Thickness | Minimum Weight |
|------------|--|-------------------|------------------------------|
| Geotextile | 100 lbs. minimum for extra strength fabric. | 300 microns | 300 g/m ² minimum |
| Geotextile | 100 lbs. minimum for standard strength fabric. | 300 microns | 300 g/m ² minimum |
| Geotextile | 100 lbs. minimum for standard strength fabric. | 300 microns | 300 g/m ² minimum |

BIG CREEK DEVELOPMENT
Lund Lane Improvement Package

BMP Details & Specifications

Blittes County Washington

WESTERN PACIFIC
ENGINEERING & SURVEY

A TERDA DEVELOPMENT SERVICES CORPORATION
1328 E. Hunter Place, Moses Lake, Washington
T: (509) 765-4923 F: (509) 765-1298

Services by Washington and beyond.

Designed by: NED
Drawn by: JRM/704
Checked by: NED
Project No.: 178418
Scale: 1/4" = 1'-0"
Date: 06/23/18

SHEET NO.
C3.2
143028

| No. | Revision | Date | By |
|-----|----------|------|----|
| | | | |